

Automatic Sprayer for MALDI Imaging

iMLayer AERO

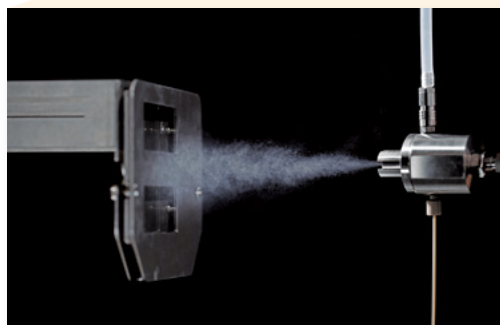


Easily Obtain Images with High Sensitivity and High Spatial Resolution

The iMLayer™ AERO incorporates a sample stage that moves at a controlled rate while maintaining the same distance from the spray nozzle, enabling stable matrix spraying.

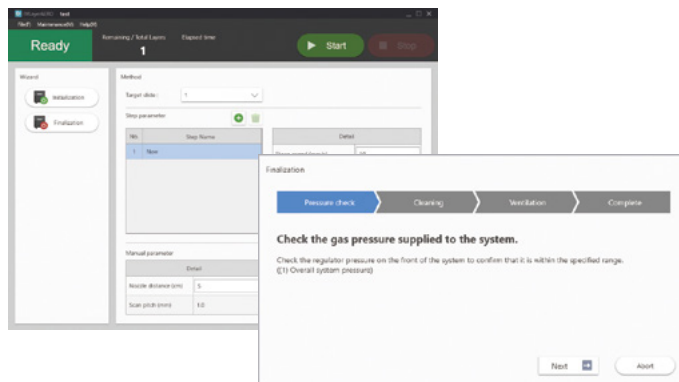
Over multiple strokes, the sample becomes laminated with fine matrix crystals, enabling high sensitivity and high spatial resolution.

Work Flow



Sample Stage and Spray Nozzle

The newly developed spray nozzle provides a fine spray. The distance between the sample and nozzle can be adjusted between 5 and 10 cm.



Control Software

The experiment wizard windows enable ease of use and mistake-free experimental setup. This wizard, in combination with included preset methods, allows users to become proficient in no time.

Imaging with High Reproducibility

● Humidity Control

Humidity does not impact matrix deposition because the atmosphere within the spray chamber is replaced before pretreatment. Spraying can be performed under more stable conditions than with a hand spray.

iMLayer AERO

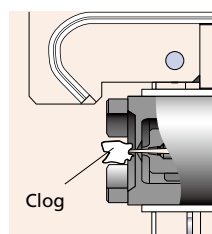


Humidity has no impact.

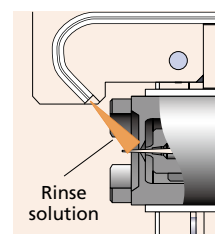
N₂ purging

● Clog-Free Reagent Delivery

If the matrix clogs the nozzle tip, the spray becomes unstable, which can lead to lower reproducibility. The rinsing mechanism allows for clog-free, stable spraying, which enables high reproducibility in MALDI analyses.



Clog



Rinse solution

Both Sensitivity and Spatial Resolution Achieved

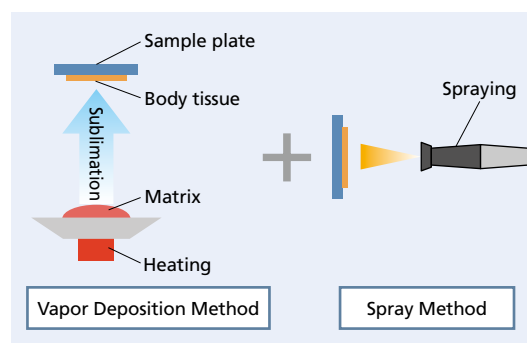
● Excellent Spray Performance

The standard protocol provides sensitivity on par with a hand spray along with improved resolution, homogeneity and reproducibility.

● Two-Step Vapor Deposition

To acquire high spatial resolution (5 to 10 μm) images and increase sensitivity, a two-step vapor deposition method can be implemented in combination with the iMLayer matrix vapor deposition system has been developed.* This unique experiment can only be implemented using Shimadzu sample preparation solutions.

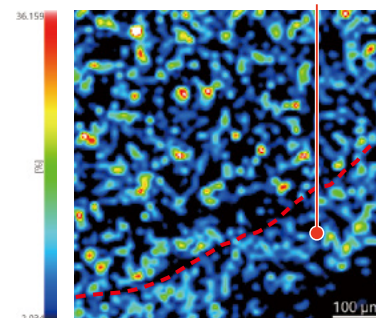
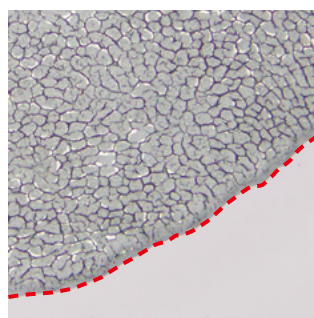
* Patent No.: JP6153139 and JP6183779



Two-Step Vapor Deposition Allows for Very Fine Images with Minimal Blur

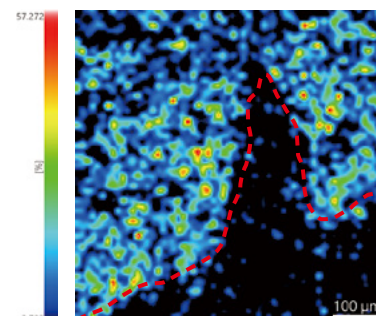
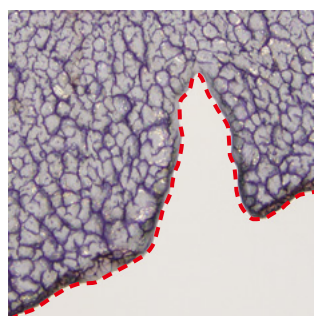
Hand Spray

- Matrix : 9-AA
- Volume used : 200 μL



Two-Step Vapor Deposition

- 1 step: iMLayer (vapor deposition method)
 - Film thickness : 1 μm
- 2 step: iMLayer AERO (spray method)
 - Solution delivery volume : 120 μL/min
 - Stage speed : 70 mm/sec
 - Laminating layers : 4



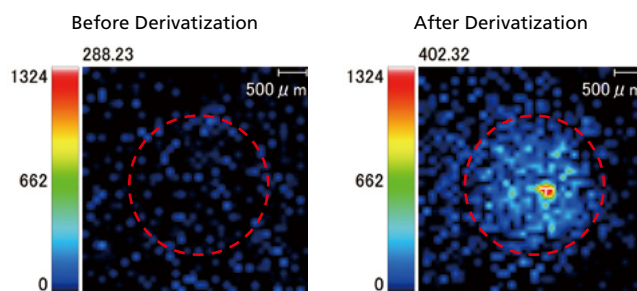
Applicable to Pretreatment Other than Matrix Coatings

● Derivatization Treatment

The system is also compatible with derivatization treatment (Girard's reagent T).

A single iMLayer AERO unit provides extensive MSI pretreatment coverage.

Using derivatization can improve the ionization efficiency of testosterone and other substances that are difficult to ionize.



Sample : 1 μ M spot of testosterone
 Derivatization: Girard's reagent T, standing for 120 minutes at room temperature
 Matrix : CHCA

Specifications

Applicable Matrix	DHB, 9-AA, CHCA
Compatible Derivatization Reagent	Girard's reagent T
Compatible Enzyme Digestive Reagent	Trypsin
Sample	Glass slide (76 × 26 mm), 1 to 2 slides
Size and Weight	W 400 × D 480 × H 445 mm, 33 kg
Required Power	Single-phase 100 to 240 VAC, 50/60 Hz
Maximum Power Consumption	100 VA
Temperature and Humidity	18 to 28 °C, 40 to 70 %
Nitrogen	Flowrate of 20 L-atm/min; purity of 90 % or higher (not contaminated with flammable or supporting gases)

Note: A control computer for the system is separately required.

iMLayer is a trademark of Shimadzu Corporation.



Shimadzu Corporation
www.shimadzu.com/an/

For Research Use Only. Not for use in diagnostic procedures.

This publication may contain references to products that are not available in your country. Please contact us to check the availability of these products in your country.

Company names, products/service names and logos used in this publication are trademarks and trade names of Shimadzu Corporation, its subsidiaries or its affiliates, whether or not they are used with trademark symbol "TM" or "®".

Third-party trademarks and trade names may be used in this publication to refer to either the entities or their products/services, whether or not they are used with trademark symbol "TM" or "®".

Shimadzu disclaims any proprietary interest in trademarks and trade names other than its own.

The contents of this publication are provided to you "as is" without warranty of any kind, and are subject to change without notice. Shimadzu does not assume any responsibility or liability for any damage, whether direct or indirect, relating to the use of this publication.